

SOUTHSHORE HILLS

WESTLAKE VILLAGE



ELEVATION 1-A

SOUTHSHORE HILLS

PLAN #1

ONE STORY—1,915 SQUARE FEET

3 BEDROOMS 2 BATHS

THIS FLOOR PLAN INCLUDES:

- HANDCRAFTED DOUBLE ENTRY DOORS
- LARGE FAMILY DINING AREA
- INTERIOR SERVICE PORCH AND LAUNDRY AREA
- WET BAR WITH DECORATOR CABINETS
- CERAMIC TILE ENTRY

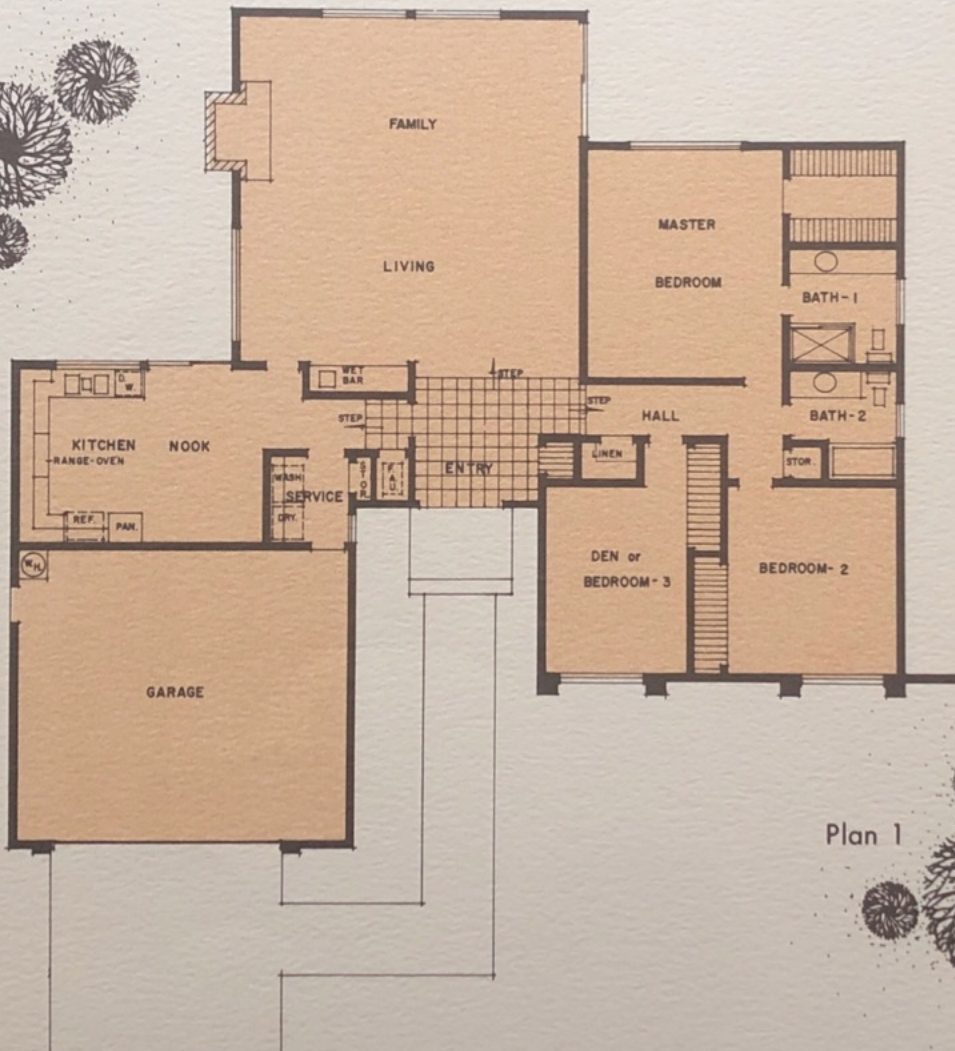
- Built-in TV & Telephone Outlets
- O'Keefe & Merritt Dishwasher
- Decorator Lighting Fixtures
- Gas Forced-Air Heating
- Fireplace
- Wall-to-Wall Carpeting in Decorator Selected Areas
- Wood Shake Roofs
- Underground Utilities
- Concrete Driveway
- Cultured Marble Bath Tops
- Homes Prepared for Air Conditioning
- Gas or Electric Appliances

INCLUDED FEATURES:

- Large master Bedroom Suite with Private Bath
- Luminous Ceiling in Kitchen
- Ceramic Tile Kitchen Counters
- O'Keefe & Merritt Full-size Double Oven & Range

NOTE: Wallpaper, draperies, certain carpeting and floor materials shown in display models are not included—please consult with salesman.

Westlake Village reserves the right to alter price, product or design without notice or obligation.



Plan 1